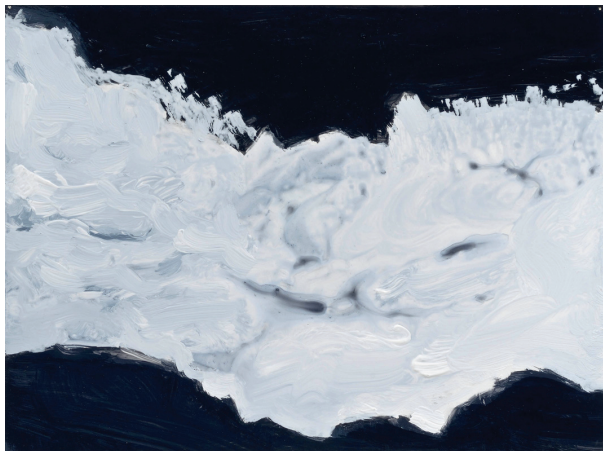


gallerí
KLAUSTUR
2013

JOAN PERLMAN

Rivers to the Sea

18.5. - 1.6.



The paintings in the exhibition *Rivers to the Sea* are part of a large new project of video and paintings called *Sanctuary*, which I am currently working on here at Skriduklaustur.

The glacial rivers of Iceland have inspired my paintings and video work for the last ten years. These gouache paintings are based on video stills from the southeast's turbulent river Hverfisfljót, a long-standing subject of my work. They are versions of large paintings in progress in my studio in Los Angeles.

The *Sanctuary* project will include a multi-screen video installation inspired by the power and vulnerability of the far north's glacial waters and disappearing ice, using layers of color, light and sound in sequential large-scale video projections to create an immersive installation. It will feature original sound by an American and/or Icelandic musician.

The area in the eastern highlands where *Sanctuary* is being filmed contains the nexus of major glacial river systems flowing north from their source in the Vatnajökull glacier. A meditation on the raw energy of nature, *Sanctuary* will also infer the deep implications of climate change in the far north landscape and elsewhere.

JOAN PERLMAN



Untitled.

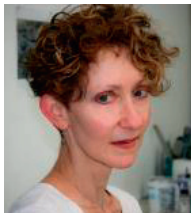
My paintings and video work have been widely exhibited in the US and abroad.

For more information please visit:

www.joanperlman.com.

Video work can be seen here: vimeo.com/20086175.

Joan Perlman



JOAN PERLMAN er fædd í New York en býr og starfar í Los Angeles. Hún nýtur styrks til listsköpunar frá The American-Scandinavian Foundation til dvalar í gestaíbúðinni Klaustrinu. *JOAN PERLMAN was born in New York, NY, but she lives and works in Los Angeles. The American-Scandinavian Foundation, New York, supports with a Grant for the Creative Arts to work in Iceland 2013.*

SÍÐUSTU EINKASÝNINGAR / *SELECTED SOLO EXHIBITIONS:*

- 2012 The Niche at the Fine Arts Library, University of Virginia, Charlottesville, VA
- 2008 Fringe Exhibitions, Los Angeles, CA
- 2008 David Cunningham Projects, San Francisco, CA
- 2007 Hafnarborg Institute of Culture and Fine Art, Iceland

SÍÐUSTU SAMSÝNINGAR / *SELECTED GROUP EXHIBITIONS:*

- 2013 Santa Monica Museum of Art, Santa Monica, CA, Incognito
- 2012 Headlands Center for the Arts, San Francisco, Headlands at 30
- 2011 POST Gallery, LA, Transmute
- 2011 Long Beach Museum of Art, CA, Influential Element: Exploring the Impact of Water
- 2011 Kristi Engle Gallery, LA, TBA: A Group Video Exhibition in 7 Parts
- 2011 Westmont Museum of Art, Santa Barbara, CA, 5 x 5 Invitational
- 2011 Wall-Space Gallery, Seattle, WA, Life Support Japan
- 2011 Zask Gallery, Palos Verdes, CA, Second Nature: Reinvestigating Landscape
- 2010 Jancar Gallery, Los Angeles, Linda Day/Joan Perlman/Hovey Brock
- 2010 Exit Art, New York, NY, What Matters Most